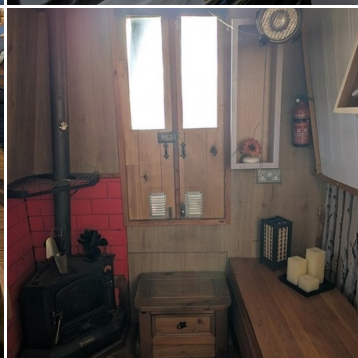
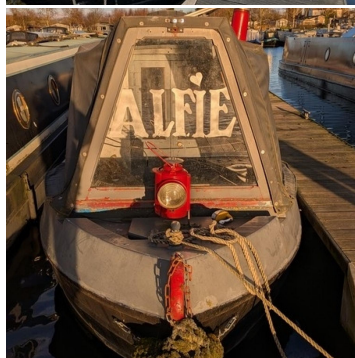
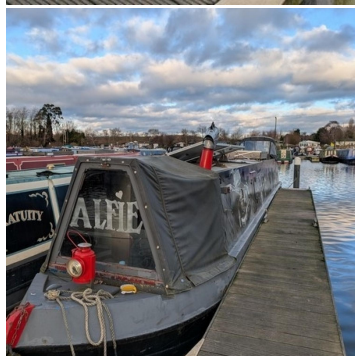




# BOAT SALES

LAKELAND LEISURE ESTATES



## Alfie - Semi Trad

**Price: £48,000**

### Key Features

Berths:	4
Length & Type:	50ft Narrowboat
Year:	2004

### Description

Step aboard Alfie, a 50ft semi-trad narrowboat crafted by JP Boats in 2004, and discover a floating home that beautifully combines traditional craftsmanship with contemporary comforts. Perfect for off-grid living, Alfie is equipped with 1100w solar panels, a robust off-grid power system, and LED lighting throughout. The boat's striking artist-painted exterior is complemented by oak-engineered flooring and elegant oak worktops, bringing warmth and sophistication to the interior. Thoughtful features like double side hatches and both pram and cratch covers enhance functionality and allow you to enjoy picturesque views and fresh air wherever you moor.

Alfie's galley is as stylish as it is practical. With its sleek, tiled backsplash and oak countertops, it's a chef's dream on the water. The kitchen is fully equipped with a modern oven, grill, and a 3-ring hob for versatile cooking options. A microwave and an under-counter 12v fridge provide convenience, while ample cupboards, drawers, and an overhead shelving unit ensure you have plenty of space for all your culinary essentials. The sink, complete with a drainer, adds practicality to the thoughtfully designed space.

The lounge area of Alfie is the perfect place to relax after a day of cruising. A comfortable sofa bed offers extra sleeping space for guests, while the Bubble diesel stove creates a cosy atmosphere on cooler evenings. Double side hatches flood the space with natural light and offer scenic views, connecting you with the beauty of the waterways. This space invites you to settle in with a good book or enjoy conversation with friends in a warm and welcoming setting.

Your private retreat awaits in Alfie's master bedroom. The brand-new double mattress, complete with under-bed storage, ensures restful nights and a clutter-free space. A double wardrobe and overhead storage units provide ample room for clothing and personal belongings. The addition of an electric radiator offers cosy warmth, making the bedroom a perfect retreat no matter the season.

The bathroom on Alfie has been designed for comfort and convenience. A spacious vanity unit with a sink and large mirror adds a touch of luxury, while the Thetford cassette toilet includes extra cassettes for practicality. The generous 800mm shower, enclosed by a curtain, provides plenty of room for relaxation, and modern panelling adds a sleek and contemporary look. Storage solutions and a twin-tub washing machine complete this highly functional space.

Alfie offers the perfect blend of charm, functionality, and sustainability, making it an ideal choice for those seeking an off-grid lifestyle or a luxurious escape. With thoughtful details like oak finishes, abundant storage, and eco-friendly features, Alfie is more than just a narrowboat—it's a sanctuary where modern living meets the tranquillity of the waterways.

#### Disclaimer

Whilst every care has been taken in the preparation of these specifications, no guarantee is given or implied as to their accuracy. These particulars are intended only as a guide and they do not constitute a term of any contract. Lakeland Leisure Estates Ltd advises prospective purchasers to obtain an independent survey from a qualified Marine Surveyor to satisfy themselves as to the condition of the craft.

Contact Us

Call: 07801 962636

Email: [roydon@lakelandleisureboatsales.co.uk](mailto:roydon@lakelandleisureboatsales.co.uk)

[www.lakelandleisureboatsales.co.uk](http://www.lakelandleisureboatsales.co.uk)





## Additional Specs

- **Length/ Boat Style:** 50' Semi Trad
- **Year:** 2004
- **Number of bathrooms** 1
- **Berths** 4
- **Hull By/ Fit out by:** JP Boats
- **Layout stern to bow:** Bedroom, bathroom, galley, saloon,
- **Boat Safety Certificate:** Valid until 2029
- **Last Blacking + type:** March 2024
- **Inspection hatch and location:** Below electric cupboard
- **P/out or Cassette:** Cassette
- **Insulation:** Spray foam
- **Last Survey:** 2014
- **External Covers** Cratch and pram cover
- **Bow thruster** No
- **Side Hatches and location:** X2 Saloon
- **Batteries:** 1 Lithium 2 Led acid
- **Electric Supply:** 12v and 240v – 2500w pure sin wave inverter, x2 MPPT controllers,
- **Water capacity** 250L
- **Fuel capacity** 160L
- **Hot Water Supply:** Calorifier
- **Cabin Heating:** 4.5kw bubble diesel stove, separate Diesel tank
- **Gas Cylinders No+ type:** 2 13kg

### Disclaimer

Whilst every care has been taken in the preparation of these specifications, no guarantee is given or implied as to their accuracy. These particulars are intended only as a guide and they do not constitute a term of any contract. Lakeland Leisure Estates Ltd advises prospective purchasers to obtain an independent survey from a qualified Marine Surveyor to satisfy themselves as to the condition of the craft.

Contact Us

Call: 07801 962636

Email: [roydon@lakelandleisureboatsales.co.uk](mailto:roydon@lakelandleisureboatsales.co.uk)

[www.lakelandleisureboatsales.co.uk](http://www.lakelandleisureboatsales.co.uk)

