



BOAT SALES

LAKELAND LEISURE ESTATES



Atlantic - Traditional

Price: £46,000

Key Features

Berths:	2
Length & Type:	45ft Narrowboat
Year:	1991

Description

Step aboard Atlantic, a beautifully crafted 45ft traditional narrowboat built by the renowned Doug Moore. Designed with both comfort and practicality in mind, this charming vessel offers a warm and inviting interior, perfect for those looking to embrace life on the waterways. With a well-planned layout and traditional character, Atlantic provides a cosy yet functional space for both short trips and long-term cruising.

The heart of the boat is its galley, thoughtfully designed for efficiency and ease of use. A stainless steel sink and drainer provide a practical workspace, while a Vanette 4000/2 four-burner gas hob and Thetford Duplex oven/grill offer all the essentials for preparing meals onboard. A Swan fridge ensures ample space for storing fresh produce, while the storage cupboards and drawers keep everything neatly organized. The overhead wall cupboard adds even more storage, making excellent use of the space.

The saloon is a welcoming area to unwind after a day on the water. A fixed double seating area offers both comfort and hidden storage beneath, making it an efficient use of space. A multifuel stove provides warmth and ambiance, perfect for cosy nights aboard. The wood-effect flooring enhances the traditional charm, while a corner shelf with a built-in TV unit allows for entertainment while relaxing in the comfort of the lounge.

The master bedroom is a peaceful retreat, featuring a small double bed with storage underneath for additional convenience. A privacy curtain separates the sleeping area, ensuring a quiet and restful space. A built-in shelf for personal belongings keeps essential items close at hand, adding to the room's practicality.

The bathroom is well-equipped, featuring a shower with mixer taps, offering both convenience and comfort. A cassette toilet is included, complete with three cassettes for extended use. The corner sink unit provides ample storage beneath, while a wall-mounted mirror storage cupboard adds both functionality and style to the space.

At the stern, the boatman's cabin doubles as a storage area, providing cupboards for mooring equipment and offering easy access to the engine. This practical space ensures that essential tools and equipment are neatly stored yet easily accessible.

Built by Doug Moore, Atlantic boasts a classic stern-to-bow layout: Engine Room ☑ Bathroom ☑ Master Bedroom ☑ Galley ☑ Saloon. The thoughtful arrangement maximises space while maintaining the charm and character of a traditional narrowboat. Whether you're seeking a weekend escape or a full-time floating home, Atlantic is a well-equipped and inviting narrowboat ready to embark on new adventures.

Disclaimer

Whilst every care has been taken in the preparation of these specifications, no guarantee is given or implied as to their accuracy. These particulars are intended only as a guide and they do not constitute a term of any contract. Lakeland Leisure Estates Ltd advises prospective purchasers to obtain an independent survey from a qualified Marine Surveyor to satisfy themselves as to the condition of the craft.

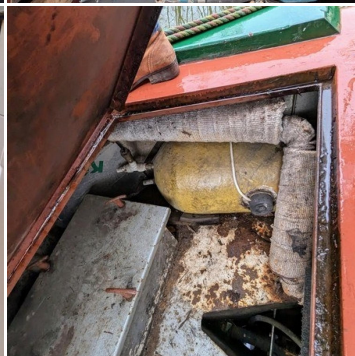
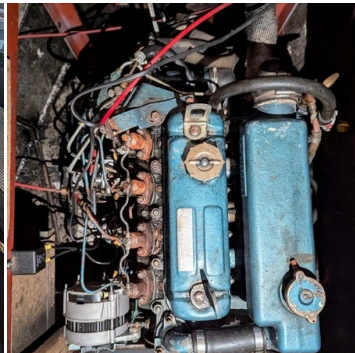
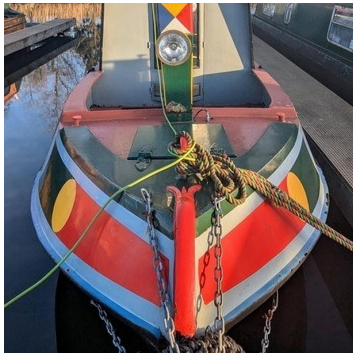
Contact Us

Call: 07354902086

Email: greathaywood@lakelandleisureboatsales.co.uk

www.lakelandleisureboatsales.co.uk





Additional Specs

- **Length/ Boat Style:** 45ft Traditional Narrowboat
- **Year:** 1991
- **Number of bathrooms:** 1
- **Berths:** 2
- **Water Tank Capacity:** 500 Litres
- **Fuel Tank Capacity:** 189 Litres
- **Hull By/ Fit out by:** Doug Moore
- **Layout stern to bow:** Engine room, Bathroom, Bedroom, Galley, Saloon
- **Engine and gearbox:** BMC 1.5
- **Engine hours/Last service:** Last serviced - June 2024
- **Boat Safety Certificate:** Yes, Expires 4/4/2028
- **Last Blacking & type:** Bitumen – June 2024
- **Hull thickness:** 10:6:4
- **Inspection hatch and location:** Bathroom Port side
- **P/out or Cassette:** Cassette toilet with 3 cassettes in total
- **Internal cabin height:** 6ft 5"
- **Insulation:** Polystyrene
- **Last Survey:** Hull Survey 26th March 2024
- **Side Hatches and location:** Galley located starboard side
- **Batteries:** 1 x leisure lead acid battery 200AH / 20HR 12V
- **Electric Supply:** Engine, shoreline, Domestic batteries, Solar panel x 1, Sinwave combined inverter charger
- **Hot Water Supply:** Hot water is heated via the engine, calorifier, Morco gas hot water heater,
- **Cabin Heating:** Multifuel stove
- **Gas Cylinders No+ type:** 2 x 13kg propane

Disclaimer

Whilst every care has been taken in the preparation of these specifications, no guarantee is given or implied as to their accuracy. These particulars are intended only as a guide and they do not constitute a term of any contract. Lakeland Leisure Estates Ltd advises prospective purchasers to obtain an independent survey from a qualified Marine Surveyor to satisfy themselves as to the condition of the craft.

Contact Us

Call: 07354902086

Email: greathaywood@lakelandleisureboatsales.co.uk

www.lakelandleisureboatsales.co.uk

