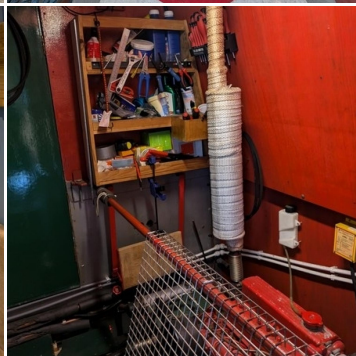
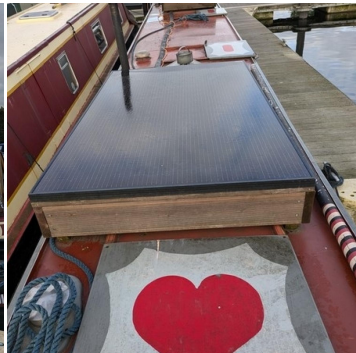




BOAT SALES

LAKELAND LEISURE ESTATES



St Kilda - Traditional Narrowboat

Price: £38,000

Key Features

Berths:	3
Length & Type:	48ft Narrowboat
Year:	1907

Description

Meet St Kilda, a living piece of canal heritage.

Step aboard St Kilda, a vessel rich in history and brimming with charm. Built on February 15, 1907, by Eli Aston of Tipton, she first made her way along the Birmingham Canal Network as a 35-foot iron-hulled working boat, designed to haul materials vital to Britain's bustling industrial heartland. Commissioned by A. Griffiths of Netherton, and later serving companies like Harts Hill Iron and Stewarts & Lloyds Ltd., St Kilda embodies the legacy of the country's canals, carrying her enduring strength and character through each era. In 1976, she began an exciting new chapter, transformed into a 48-foot pleasure cruiser, blending her storied past with a modern layout that's inviting, functional, and perfect for leisure cruising.

Every part of St Kilda has been thoughtfully designed to preserve her heritage while offering the comfort and practicality of a modern canal boat. Starting at the stern, her boatman's cabin captures the spirit of traditional canal living, with a cosy multi-fuel stove for warmth, hanging storage options, and an additional sleeping area—a perfect blend of nostalgia and utility. Her engine room houses a powerful Beta Marine 43 with a hydraulic drive, boasting around 3000 hours of service and a reliable heart for extended adventures along the waterways.

Further along, the bathroom brings essential amenities with a touch of classic charm. Fitted with a cassette toilet, a sink vanity, and a shower, it's a practical and comfortable space, proving that St Kilda's historic nature need not come at the expense of convenience.

The master bedroom provides a peaceful retreat for two, with a comfortable double bed and enough space to feel like a true home on the water. Ideal for restful nights after a day on the canals, it's a cosy space that invites relaxation. The galley is another beautifully crafted area, combining practicality with rustic charm. With under-counter wooden units offering excellent storage, an eye-level shelving unit for easy access to essentials, a compact fridge with an icebox, and a freestanding oven and grill with a four-ring hob, it's a fully functional kitchen where canal life meets culinary creativity.

The lounge is St Kilda's warm and welcoming heart. The breakfast bar and stools add a sociable touch, perfect for enjoying meals, conversation, or a quiet cup of tea by the water's edge. The multi-fuel stove fills the space with a cosy warmth, while the sofa and overhead shelving create a comfortable, inviting spot to relax, read, or simply enjoy the view from your floating sanctuary.

St Kilda represents the best of both worlds: the sturdy, time-worn character of a true working vessel combined with the comfort and style of a traditional narrowboat. Her reconfiguration has been artfully completed to retain her original charm while adapting to the needs of today's canal cruiser. Whether you're drawn to her for the romance of history or the tranquillity of canal life, St Kilda is a perfect vessel for an authentic journey through time and across Britain's beautiful waterways.

Disclaimer

Whilst every care has been taken in the preparation of these specifications, no guarantee is given or implied as to their accuracy. These particulars are intended only as a guide and they do not constitute a term of any contract. Lakeland Leisure Estates Ltd advises prospective purchasers to obtain an independent survey from a qualified Marine Surveyor to satisfy themselves as to the condition of the craft.

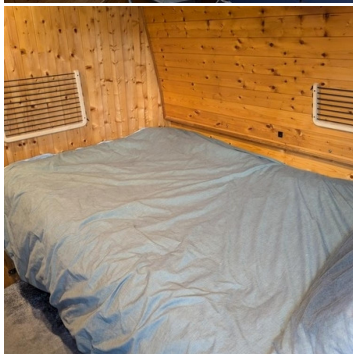
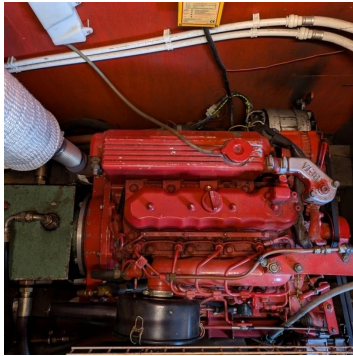
Contact Us

Call: 07801 962636

Email: roydon@lakelandleisureboatsales.co.uk

www.lakelandleisureboatsales.co.uk





Additional Specs

- **Length/ Boat Style:** 48ft Trad
- **Year:** 1907
- **Number of bathrooms** 1
- **Berths** 2/3
- **Engine room** Beta 43 with hydraulic drive – 3000 hours
- **Hull By/ Fit out by:** Built by Eli Aston of Tipton in 1907
- **Layout stern to bow:** Boatman's cabin, engine room, bathroom, bedroom, galley, lounge
- **Engine and gearbox:** Beta 43 with hydraulic drive – 3000 hours
- **Boat Safety Certificate:** 31/8/25
- **Last Blacking + type:** 26/3/23 with 2 coats bitumen
- **Hull thickness:** 6mm – 4.8mm
- **P/out or Cassette:** Cassette
- **Last Survey:** 27/01/21
- **Side Hatches and location:** 2 starboard
- **Batteries:** 4 Leisure 1 starter
- **Electric Supply:** Solar, solar charge MPPT controller, 12v, 240v sockets
- **Galvanic Isolator:** 300 Litres
- **Hot Water Supply:** Calorifier
- **Cabin Heating:** Multi fuel stove, electric heaters
- **Gas Cylinders No+ type:** X2 13kg LPG

Disclaimer

Whilst every care has been taken in the preparation of these specifications, no guarantee is given or implied as to their accuracy. These particulars are intended only as a guide and they do not constitute a term of any contract. Lakeland Leisure Estates Ltd advises prospective purchasers to obtain an independent survey from a qualified Marine Surveyor to satisfy themselves as to the condition of the craft.

Contact Us

Call: 07801 962636

Email: roydon@lakelandleisureboatsales.co.uk

www.lakelandleisureboatsales.co.uk

