



# BOAT SALES

LAKELAND LEISURE ESTATES



## Toerag - Traditional Stern Narrowboat

**Price: £49,995**

### Key Features

<b>Berths:</b>	2+2
<b>Length &amp; Type:</b>	50ft Narrowboat
<b>Year:</b>	1994

### Description

Toerag is a well-maintained 50ft traditional stern narrowboat, built in 1994 by Ken Bonikowski. Designed for comfortable cruising, this characterful boat features a practical layout, a recent internal refit in 2021, and a robust Kingfisher KD26 engine. With ample storage, modern amenities, and a warm, inviting interior, Toerag is an excellent choice for those seeking a well-equipped narrowboat.

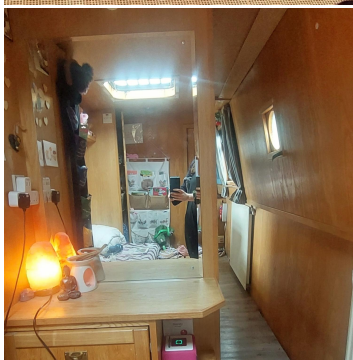
The bedroom features a fold-down double bed with an overhead shelf, a vanity unit, and ample wardrobe space, ensuring a comfortable and organised living area.

The bathroom is well-equipped with a sink and vanity unit, a macerating toilet, and a shower, offering a practical and private space for everyday use.

The galley is compact yet functional, equipped with a 12v fridge, a gas hob, an oven with a grill, five cupboards, an overhead cupboard and a set of four drawers. The well-designed kitchen provides ample storage and workspace, making meal preparation easy.

The saloon is a bright and airy space, featuring a bed settee for additional sleeping capacity and double doors that open onto the front deck, enhancing indoor-outdoor living. Please note that the bed settee and mattress are not included in the sale.

Toerag is a well-maintained, recently refitted narrowboat, offering a comfortable and functional interior with ample storage. Viewings are highly recommended to fully appreciate what Toerag has to offer. Contact us today to arrange an appointment.



#### Disclaimer

Whilst every care has been taken in the preparation of these specifications, no guarantee is given or implied as to their accuracy. These particulars are intended only as a guide and they do not constitute a term of any contract. Lakeland Leisure Estates Ltd advises prospective purchasers to obtain an independent survey from a qualified Marine Surveyor to satisfy themselves as to the condition of the craft.

Contact Us

Call: 07748036638

Email: [saul@lakandleisureboatsales.co.uk](mailto:saul@lakandleisureboatsales.co.uk)

[www.lakandleisureboatsales.co.uk](http://www.lakandleisureboatsales.co.uk)





## Additional Specs

- **Length/ Boat Style:** 50ft trad stern narrowboat
- **Year:** 1994
- **Number of bathrooms:** 1
- **Berths:** 2+2
- **Hull By/ Fit out by:** Ken Bonikowski
- **Layout stern to bow:** Aft Cabin - Bedroom - Bathroom - Galley -Saloon
- **Engine and gearbox:** Kingfisher KD26
- **Last Survey:** February 2022
- **Boat Safety Certificate:** Valid until 14.02.2028
- **Last Blacking:** February 2022, 2-pack epoxy
- **Hull thickness:** 10:6:4
- **Inspection hatch and location:** Weed hatch, rear deck
- **P/out or Cassette:** Pump out
- **Internal cabin height:** 6'4"
- **Insulation:** Spray foam
- **External covers:** Front cratch cover
- **Batteries:** 1 starter battery / 3 domestic batteries
- **Galvanic isolator:** Yes - Safeshore Marine
- **Electric Supply:** 240v - Shoreline, twin alternator, 1.5kw inverter, solar panel
- **Hot Water Supply:** Oil immersion, engine
- **Cabin Heating:** Radiators
- **Gas Cylinders No+type:** 2 x 13kg
- **Water tank capacity:** 100 litres
- **Items excluded from sale:** Personal items, bed, sofa and mattress
- **Additional info:** Internal refit in 2021

### Disclaimer

Whilst every care has been taken in the preparation of these specifications, no guarantee is given or implied as to their accuracy. These particulars are intended only as a guide and they do not constitute a term of any contract. Lakeland Leisure Estates Ltd advises prospective purchasers to obtain an independent survey from a qualified Marine Surveyor to satisfy themselves as to the condition of the craft.

Contact Us

Call: 07748036638

Email: [saul@lakelandleisureboatsales.co.uk](mailto:saul@lakelandleisureboatsales.co.uk)

[www.lakelandleisureboatsales.co.uk](http://www.lakelandleisureboatsales.co.uk)

