



Beverley Norwood - Oct 2024

Lodge 42

Price: £169,995

Description

Presenting the ultimate in luxury, soon to grace the stunning Roydon Marina Village: The Beverley Norwood Lodge. This brand-new lodge combines elegance with unparalleled comfort, creating a perfect sanctuary for those yearning for a tranquil retreat.

Spanning 41 feet in length and 14 feet in width, The Beverley Norwood Lodge offers spacious interiors crafted with meticulous detail. Inside, you'll find two beautifully designed bedrooms, including a luxurious ensuite master with a walk-in wardrobe, ensuring comfort and sophistication at every turn.

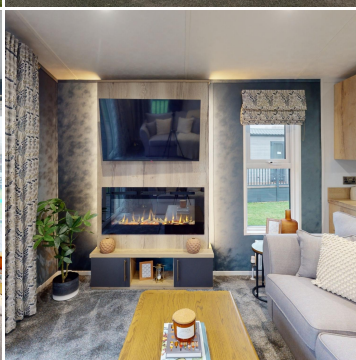
Outside, the composite deck invites you to take in the breathtaking marina views and enjoy quality time with loved ones in peaceful surroundings. Private parking adds convenience and ease, giving you seamless access to your personal escape.

With 12-month leisure access, The Beverley Norwood Lodge is designed for all-season enjoyment, allowing you to retreat from the daily hustle whenever you desire. Whether for a restful weekend or an extended stay, this lodge offers the ideal setting to recharge and create lasting memories.

Defined by impeccable craftsmanship and an idyllic location, The Beverley Norwood Lodge is luxury living at its finest. Discover the essence of relaxation and indulgence in Roydon Marina Village's newest treasure.

Price £169,995

Don't miss out on this extraordinary opportunity. Visit us today and let our knowledgeable team guide you through the process of owning the Beverley Norwood Lodge. Experience the stylish décor, embrace the refined living, and create a legacy that will be cherished for years to come. Come and visit us today to make this exquisite lodge your own!



Call: 01279 792777

Email: reception@roydonmarinavillage.co.uk

www.roydonmarinavillage.co.uk

Contact Us

